



RICHARDS BAY
INDUSTRIAL DEVELOPMENT ZONE



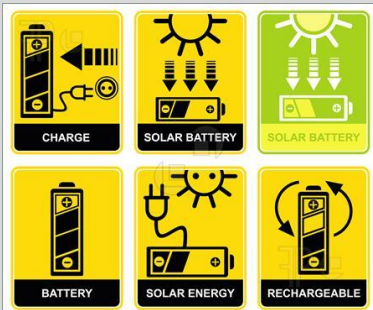
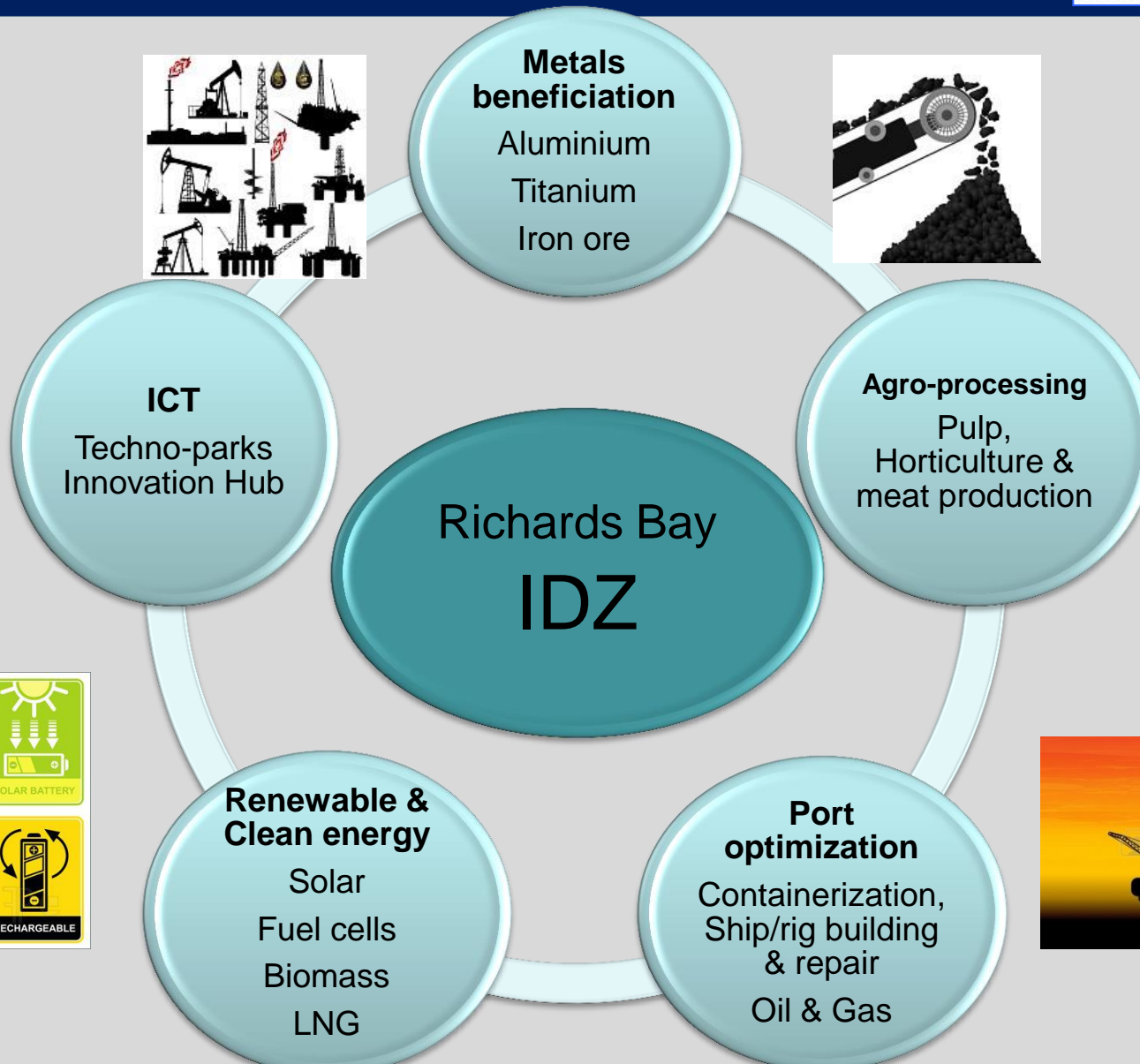
MAYOR'S ADVISORY PANEL

Infrastructure and Investment Overview

8 June 2016

SECTOR FOCUS

ECONOMIC



RBIDZ 50 YEAR MASTER PLAN EXPANSION



RICHARDS BAY
INDUSTRIAL DEVELOPMENT ZONE

Phase 1A = 96.989 Ha

Phase 1D = 64.969 Ha

Phase 1F = 110 Ha

Phase 2A = 1 000 Ha



RICHARDS BAY
INDUSTRIAL DEVELOPMENT ZONE

DEVELOPMENT STATUS PHASE 1A: COMPLETED PROJECTS



Project	Status	Funding Allocated	Benefits
Fencing	Completed Mar 2012	R 7 million	20 construction jobs
Stage 1 Bulk Earthworks (22Ha)	Completed Apr 2012	R 35 million	261 construction jobs
Engineering Contributions	Paid to uMhlathuze Municipality Aug 2012	R 74,5 million	Construction jobs
Rezoning and Revision of Phase 1A Layout	Completed June 2013	Undertaken in-house	General & Light industrial mix
Registration in Deeds Office	Completed August 2013	Undertaken in-house	Land is transferable
Phase 1A Stage 1 Civil Engineering Services	Completed Mar 2014	R 28 million	400 Construction jobs

DEVELOPMENT STATUS PHASE 1A: COMPLETED PROJECTS



Project	Status	Funding Allocated	Benefits
Stage 2 Bulk Earthworks (46 Ha)	Completed Sep 2014	R 139 million	1200 construction jobs
Phase 1A Stage 1 Electrical & ICT Services	Completed Oct 2014	R 33 million	200 Construction jobs
Phase 1A Stage 2A Civil Engineering Services	Completed Dec 2014	R 18,5 million	300 Construction jobs
Phase 1A Stage 2A Electrical Engineering Services	Completed Mar 2015	R 11 million	150 Construction jobs

DEVELOPMENT STATUS PHASE 1A: PROJECTS IN PROGRESS



Project	Status	Funding Allocated	Benefits
Phase 1A Entrance Gate	Construction expected to be completed by 20 June 2016	R 16 million	34 Construction jobs on a monthly basis
Phase 1A Stage 2B Electrical Engineering Services	Construction expected to be completed 31 May 2016	R 30 million	35 Construction jobs created on a monthly basis
Medway Road Upgrade	Construction commenced on 25 May 2016. Expected completion 31 May 2017	R 46 million	Estimated 300 construction jobs

PHASE 1A CIVIL INFRASTRUCTURE



R I C H A R D S B A Y
I N D U S T R I A L D E V E L O P M E N T Z O N E



PHASE 1A: ELECTRICAL, ICT & CCTV INFRASTRUCTURE



R I C H A R D S B A Y
I N D U S T R I A L D E V E L O P M E N T Z O N E



MEDWAY ROAD UPGRADE



R I C H A R D S B A Y
I N D U S T R I A L D E V E L O P M E N T Z O N E



MEDWAY ROAD UPGRADE



R I C H A R D S B A Y
I N D U S T R I A L D E V E L O P M E N T Z O N E



SPS MOLECOR PIPE MANUFACTURING PLANT



R I C H A R D S B A Y
I N D U S T R I A L D E V E L O P M E N T Z O N E



SPS MOLECOR PIPE MANUFACTURING PLANT



R I C H A R D S B A Y
I N D U S T R I A L D E V E L O P M E N T Z O N E



PHASE 1A: SPS MANUFACTURING



RICHARDS BAY
INDUSTRIAL DEVELOPMENT ZONE



SPS Molecor pipe products



RICHARDS BAY
INDUSTRIAL DEVELOPMENT ZONE



PHASE 1A: ENTRANCE GATE



R I C H A R D S B A Y
INDUSTRIAL DEVELOPMENT ZONE



- Low maintenance sustainable design
- Rain water harvesting for irrigation
- Solar energy use
- Natural lighting and ventilation
- Visitors reception area, 12-seater boardroom, 6 x Offices; Ablutions; guardhouse, pedestrian access

BAYSIDE ALUMINIUM SITE



R I C H A R D S B A Y
INDUSTRIAL DEVELOPMENT ZONE



- 157 ha
- Feasibility study confirmed viability
- Office accommodation
 - One stop shop (TFR, SARS, Customs, EDTEA, IDC)
- Gas to Power
 - 7 consortia
 - R4 bn/500MW to R40 bn/3000MW
 - Existing infrastructure into Bayside
- In discussion with Jindal Steel for pelleting plant on Bayside site

Urban Layout Plan



Rasil Karstadt
GWI Project Managers
Suite 507, 5th Floor, 41 Richmond Circle
Ridgegate Office Park, Umhlanga, South Africa
PO Box 4027, The Square, 4021
Website www.gwi.co.za
Office +27 0215368290 fax +27
0215368320
Mobile +27 0827752672



Durban
Tel +27 (0)11 2668386 Fax +27 (0)11 2660437
PO Box 723 Westville 3610
teleng@gettel.co.za www.gettel.co.za

Fast Dispatch: Tel +27 (0)6 1271061 Fax +27 (0)6 1271066
PO Box 1242 Inyanga 4700 email info@gettel.co.za

Fast Dispatch: Tel +27 (0)6 6627671 Fax +27 (0)6 6627672
PO Box 1242 Inyanga 4700 email info@gettel.co.za

Robertsburg: Tel +27 (0)7 5166600 Fax +27 (0)7 5166608
PO Box 142471 Inyanga 4700 email info@gettel.co.za

Stellenbosch: Tel +27 (0)21 4544444 Fax +27 (0)21 4544444

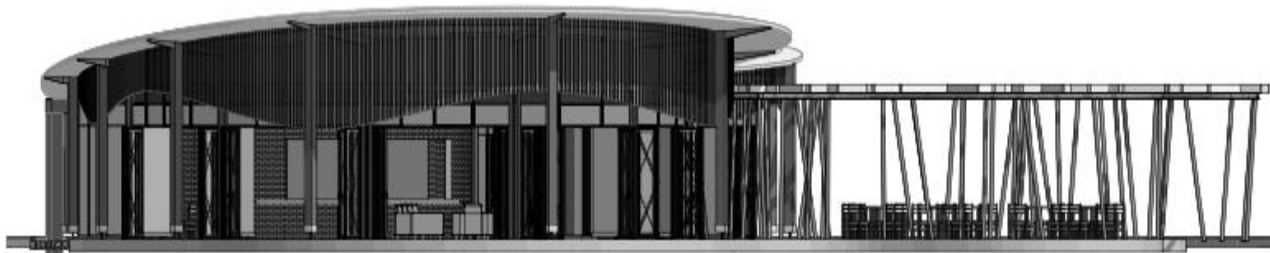
Worcester: Tel +27 (0)23 3500000 Fax +27 (0)23 3500000

Worcester: Tel +27 (0)23 3500000 Fax +27 (0)23 3500000

Worcester: Tel +27 (0)23 3500000 Fax +27 (0)23 3500000



Elevation : NORTH



Elevation : SOUTH



Elevation : WEST



Elevation : EAST



GWI
Project Managers

Paul Kereath
GW Project Managers
Suite 101, 1st Floor, 42 Ryeford Circle
Ryeford Office Park, 3rd Avenue, South Drive
PO Box 5027, The Square, 4021
Nelson Mandela
Office +27 (0)31 562 1010 Fax +27
(0)31 562 1011
Mobile +27 (0)82 7713 872

AMBRO AFRIQUE CONSULTANTS
PROF. AMBROSE ADEGBAYO

100% BLACK OWNED & OPERATED COMPANY

100% BLACK OWNED & OPERATED COMPANY

100% BLACK OWNED & OPERATED COMPANY

Durban
Tel: +27 (0)31 2980000 Fax: +27 (0)31 2980001
PO Box 123 Durban 4001
www.gwi.co.za

100% BLACK OWNED & OPERATED COMPANY

100% BLACK OWNED & OPERATED COMPANY

100% BLACK OWNED & OPERATED COMPANY



Durban
Tel: +27 (0)31 2666000 Fax: +27 (0)31 2666027
P.O. Box 742 Durban 4000
South Africa
www.durban.co.za



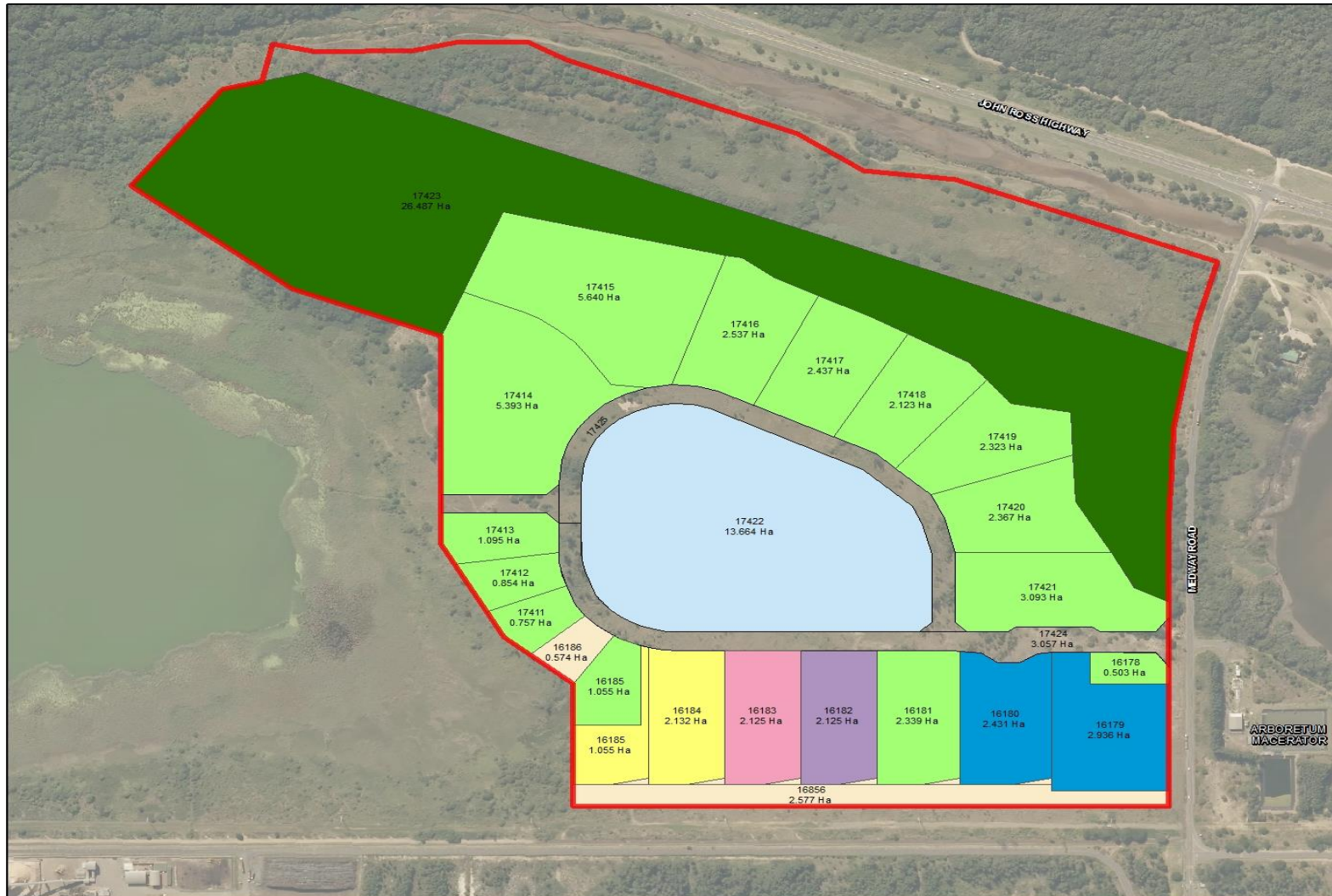
GWI
Project Managers

Send Harrold
QW Project Manager
 Suite 007, 4th Floor, 41 Rockefeller Circle
 Ridgecroft Office Park, Umhlanga, South Africa
 PO Box 6027, The Square, 6021
 Website: www.qw.co.za
 Office +27 013 8862 8078 x27
 081 5388320
 Mobile +27 082 7762 876

AMBRO AFRIQUE CONSULTANTS
PROF. AMBROSE AZIGAYO
 00254 732 222 222 • 00254 732 222 222
 00254 732 222 222

Durban
Tel +27 (0)31 2666386 Fax +27 (0)31 2666385
PO Box 723 Westville 2013

[illegible]



Regional Locality

Revised by : R K Govender
Date Revised : 7 June 2016

Downloaded from ascelibrary.org by University of California, San Diego on 06/01/15. Copyright ASCE, For All Rights Reserved, No part of this document may be reproduced without written permission from ASCE.

A horizontal scale bar with tick marks at 0, 45, 90, and 180. The word "Meters" is written at the right end of the bar.

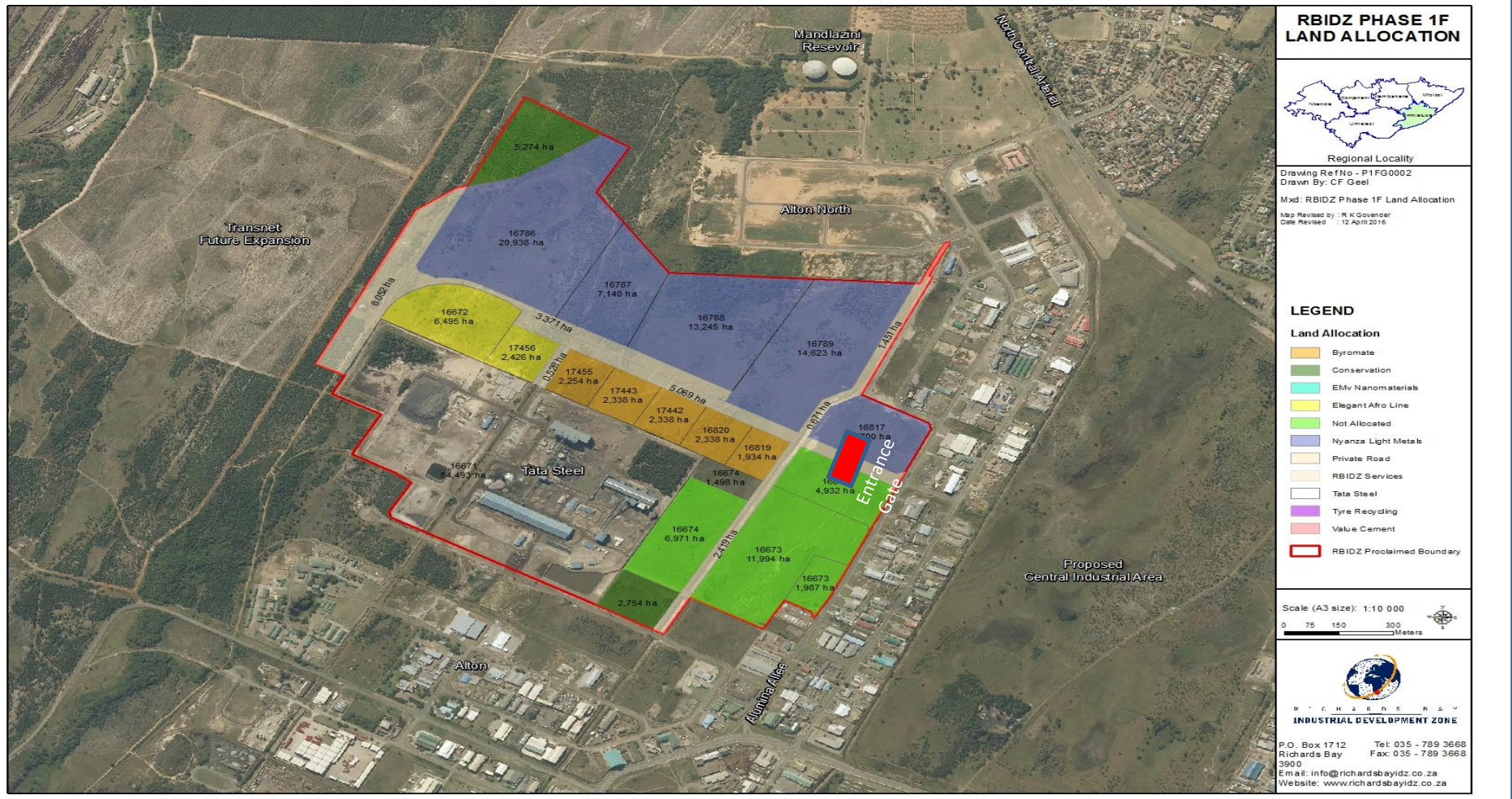


RICHARDS BAY
INDUSTRIAL DEVELOPMENT ZONE
P.O. Box 1712 Tel: 035 - 789 3668
Richards Bay Fax: 035 - 789 3668
3900
Email: info@richardsbayidz.co.za
Website: www.richardsbayidz.co.za

PHASE 1F: INVESTOR LAND ALLOCATIONS



RICHARDS BAY
INDUSTRIAL DEVELOPMENT ZONE



DEVELOPMENT STATUS PHASE 1F: PLANNED PROJECTS



Project	Status	Funding Allocated	Benefits
Installation of Civil Engineering Services	Tender awarded 23 Feb 2016. Construction expected to commence in August 2016. WULA in place, awaiting final EIA approval.	R 50,269,767	Expect to create 50 Construction jobs on a monthly basis. Serviced land for investment.
Alumina Allee Road Upgrade	Tender awarded 23 Feb 2016. Construction expected to commence in August 2016. WULA in place, awaiting final EIA approval.	R 39,299,772	Expect to create 35 Construction jobs on a monthly basis. Serviced land for investment.
Installation of Electrical Engineering Services	Tender awarded 29 Mar 2016. Construction expected to commence in August 2016. WULA in place, awaiting final EIA approval.	R 50,500,000	Construction jobs/Land ready for investors. Serviced land for investment.
Entrance Gate Complex	Tenders to be advertised in June 2016	R 17,000,000	Construction jobs/Land ready for investors
ICT Infrastructure	Tenders to be advertised in June 2016	R 30,000,000	Construction jobs/Land ready for investors
Indus Substation Upgrade	Tenders to be advertised in June 2016	R 45,000,000	Construction jobs/Land ready for investors

PHASE 1F: WETLAND LIMITATIONS



R I C H A R D S B A Y
I N D U S T R I A L D E V E L O P M E N T Z O N E

Phase 1F

Wetland footprints



PHASE 1D: KWAMBONAMBI GRASS & WETLAND LIMITATIONS



R I C H A R D S B A Y
I N D U S T R I A L D E V E L O P M E N T Z O N E



APPROVED INVESTMENTS



R I C H A R D S B A Y
INDUSTRIAL DEVELOPMENT ZONE

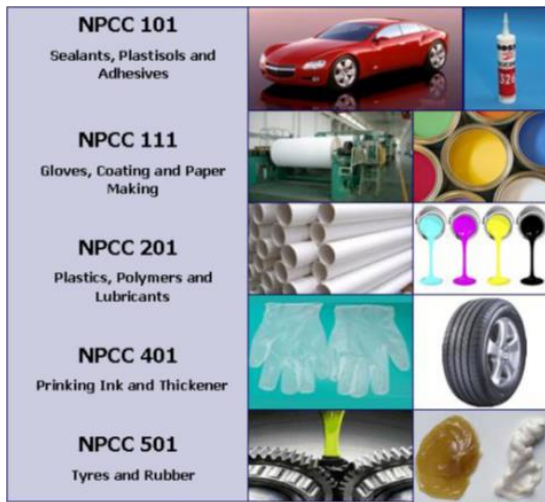
NAME OF INVESTOR	PROJECT DESCRIPTION	PROJECT VALUE
Nyanza Light Metals	Production of Titanium dioxide	R4.5 bn
Elegant Afro Line	Manufacturing of Caustic Soda /Chlorine	R500 m
EMv Nanomaterials	Production of Nano Precipitated Calcium Carbonate materials	R250 m
SPS Manufacturing Pty Ltd	Manufacturing of PVC_O Pipes	R300 m
Pro Star Export Paint	Manufacturing of variety of paints	R16 m
RB Energy Services	Machinery and equipment assembly and repacking	R20 m

APPROVED INVESTMENTS



RICHARDS BAY
INDUSTRIAL DEVELOPMENT ZONE

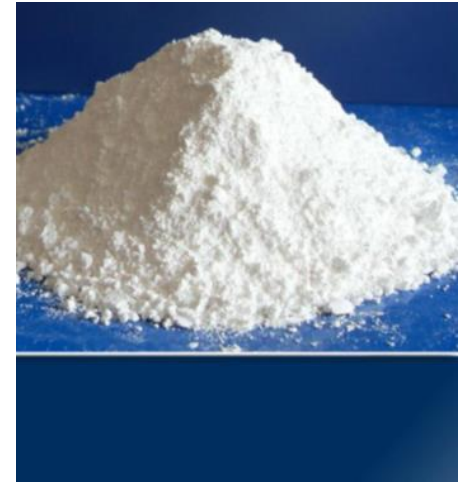
EMV Nano Materials



Prostar Paints



Nyanza Light Metals: Titanium dioxide



Elegant Afro Chemicals: Caustic Soda



RB Energy Services



LOST/DEFERRED INVESTMENTS



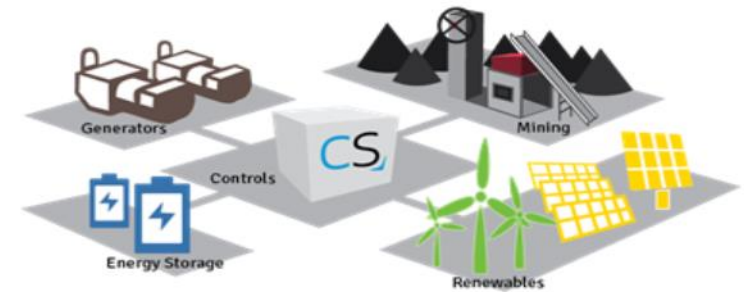
R I C H A R D S B A Y
INDUSTRIAL DEVELOPMENT ZONE

NAME OF INVESTOR	PROJECT DESCRIPTION	PROJECT VALUE
Mercedes Benz of South Africa (MBSA)	Truck Assembly Plant	€60 m (R1 bn)
Eagle Pride Power	Manufacturing of energy storage with micro grid system	R500 m
Inoxa Industries Pty Ltd	Manufacturing of Cookware	R170 m
Beijing Automobile International Corporation (BAIC)	Automotive Assembly Plant	R11,5 bn

LOST/DEFERRED INVESTMENTS



R I C H A R D S B A Y
I N D U S T R I A L D E V E L O P M E N T Z O N E



ANTICIPATED INVESTMENTS



R I C H A R D S B A Y
INDUSTRIAL DEVELOPMENT ZONE

NAME OF INVESTOR	PROJECT DESCRIPTION	PROJECT VALUE
Hebei	Establishment of Steel Plant	R60 bn
Faratec MRGP	MRGP Pipes Manufacturing	R400 m
D M Solar Manufacturing	Solar Panel Manufacturing	R650 m
Cable Manufacturing	Low Voltage Cables manuf.	R150 m

ANTICIPATED INVESTMENTS

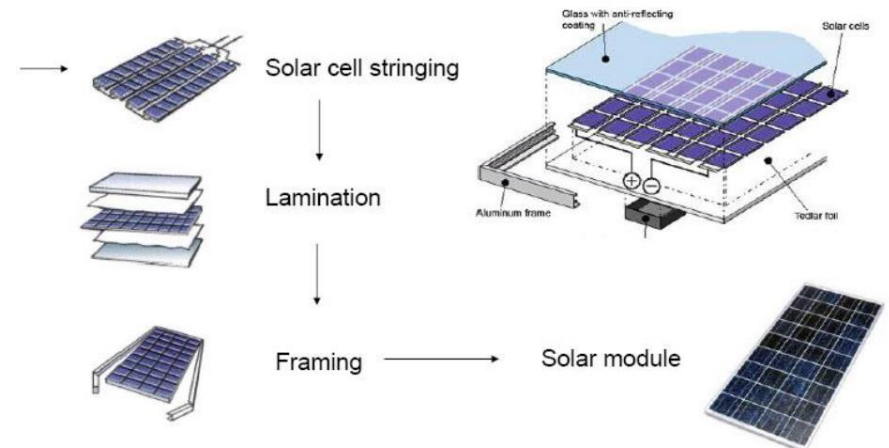
Hebei Iron & Steel



Faratec Mrgp Pipe Manufacturing



D M Solar Manufacturing



Phase 1F Wetlands Map



R I C H A R D S B A Y
I N D U S T R I A L D E V E L O P M E N T Z O N E

Phase 1F

Wetland footprints



Google earth

Image © 2016 CNES / Atrium

© 2016 Google

© 2016 AirGIS (Pty) Ltd.

Kwambonambi Hygrophilous Grassland



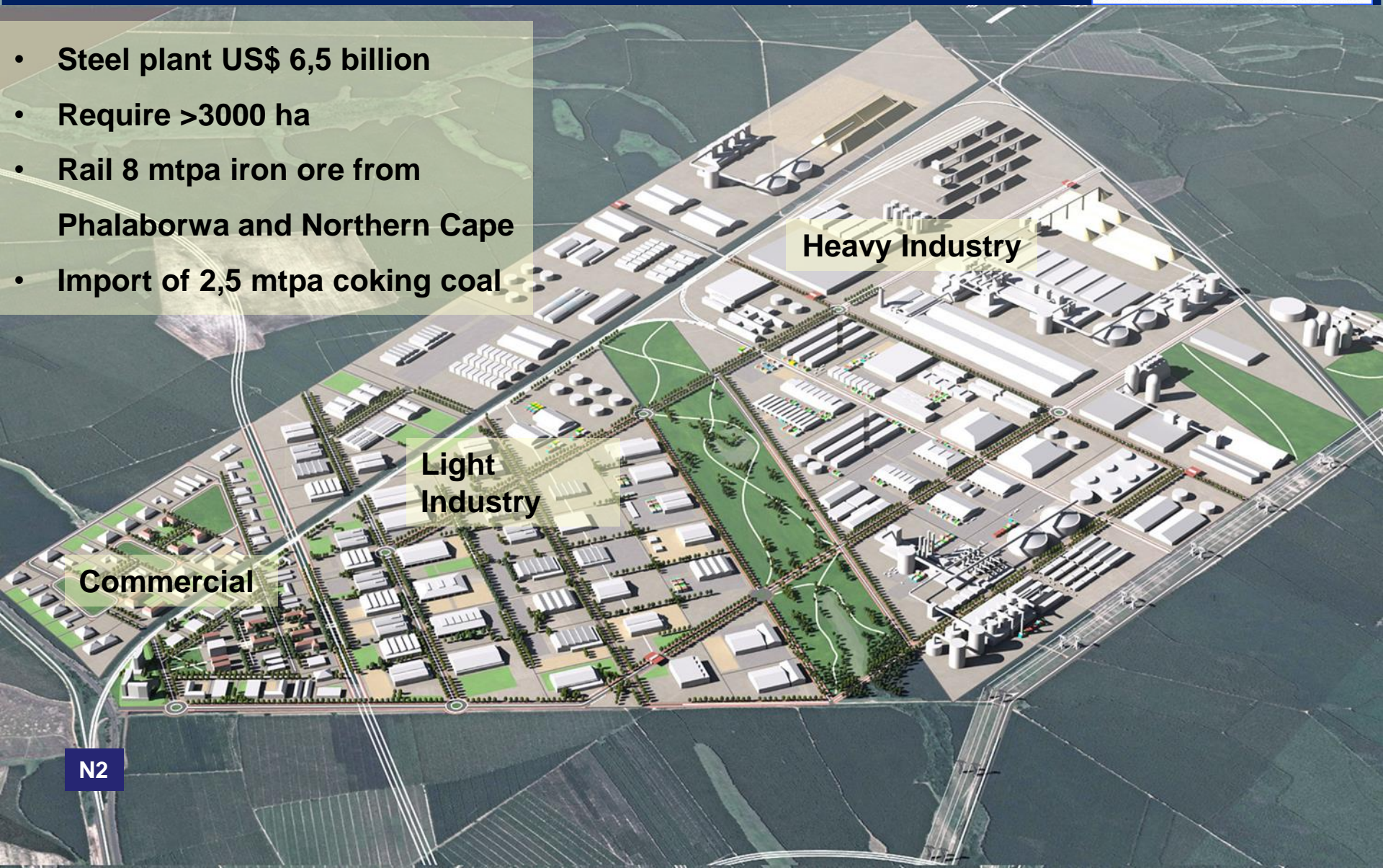
R I C H A R D S B A Y
INDUSTRIAL DEVELOPMENT ZONE



PROPOSED EXPANSION AREAS



R I C H A R D S B A Y
INDUSTRIAL DEVELOPMENT ZONE



- Steel plant US\$ 6,5 billion
- Require >3000 ha
- Rail 8 mtpa iron ore from Phalaborwa and Northern Cape
- Import of 2,5 mtpa coking coal

Heavy Industry

Light Industry

Commercial

N2

Issues / Challenges



CHALLENGES	PROPOSED MITIGATION
LAND CLAIMS Balancing Land Claims / Restitution vs development	<ul style="list-style-type: none"> • Deepen and strengthen stakeholder relationships with affected parties and Claimants
REGULATORY APPROVALS eg, WULA, EIA, Act 70 of 1970, SPLUMA etc Need for seamless integration between application of regulation / compliance requirements and projects delivery mandate	<ul style="list-style-type: none"> • Establish a robust upfront planning and project approach to key initiatives that will require regulatory approvals • Activate sound relationships with approving authorities
COHESIVE INSTITUTIONAL SUPPORT FOR INDUSTRIALIZATION Eg, Transnet, Eskom, Sanral, Water authorities etc Establish solid integration between key initiatives and relevant jurisdictional authorities	<ul style="list-style-type: none"> • Active engagements and petitioning of provincial development initiatives needs to be shared with national SOE's
MINERAL AND PETROLEUM RESOURCES DEVELOPMENT AMENDMENT BILL Uncertainty regarding the promulgation of the Act – impact on fate of licencing and prospecting	<ul style="list-style-type: none"> • Need to resolve outstanding issues related to the Bill • Promulgation of the Act will heighten certainty of gas prospecting and enhance establishment of sought-after gas hub in Richards Bay
BROADEN, DEEPEN & STRENGTHEN ZULULAND GROWTH COALITION PRESENCE & MEMBERSHIP Solidify collaboration and participation of local government in Coalition	<ul style="list-style-type: none"> • Extend scope and presence of Growth Coalition to other municipalities beyond Mhlatuze to include Ulundi etc



R I C H A R D S B A Y
INDUSTRIAL DEVELOPMENT ZONE

THANK YOU