

CALL FOR COST PROPOSALS – CADASTRAL SURVEY FOR THE SUBDIVISION OF ERVEN 10743 AND 10744, EMPANGENI, AND SUBSEQUENT CONSOLIDATION

Sir/Madam

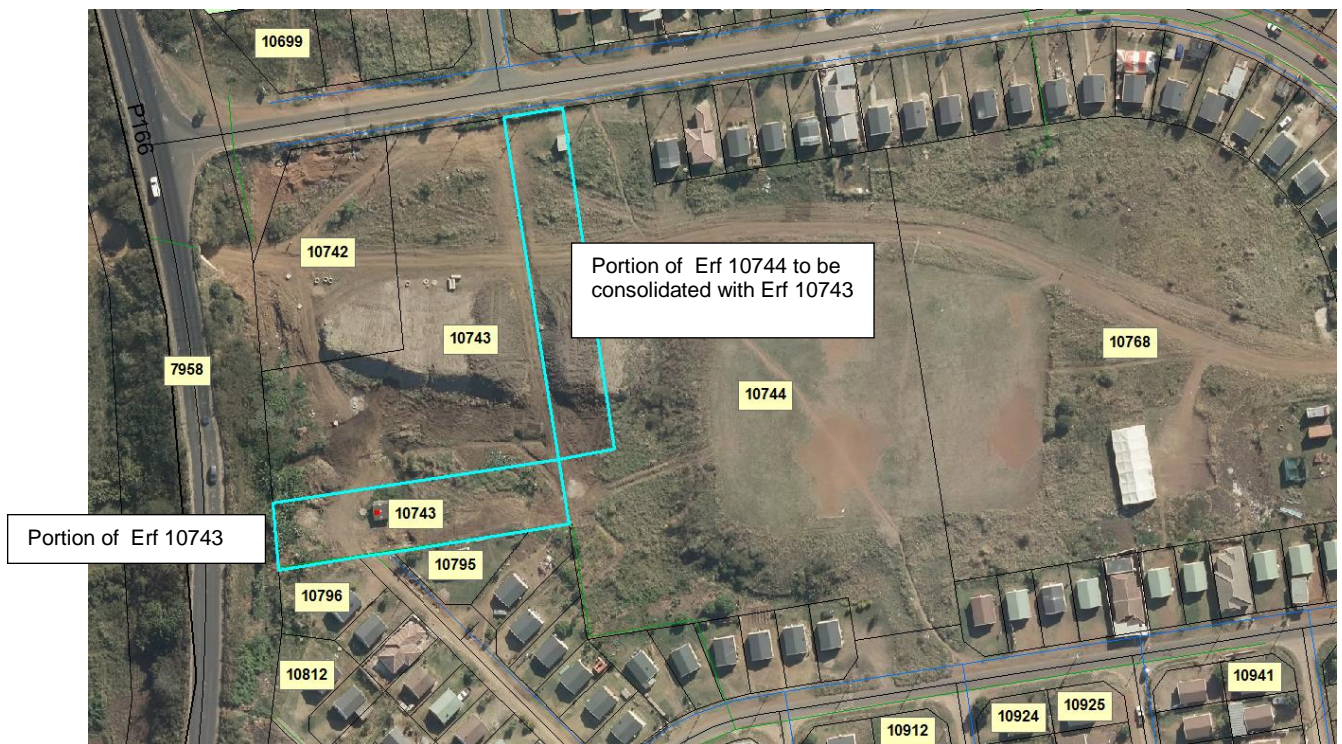
Quotations are hereby invited from suitably qualified, experienced and registered land surveyors to finalise a cadastral survey in order to:

- subdivide Erf 10743, Empangeni, into two portions;
- subdivide Erf 10744, Empangeni, into two portions;

The aim is to create two subdivisions of approximately equal size (app. 1,550m² subject to survey).

The subdivided portion of Erf 10744, Empangeni, should further be consolidated with Erf 10743, Empangeni.

The properties are located in Dumisani Makhaye Village as shown below:



The planning motivation relating to the proposal would be finalised by the Municipality, and the designated erf numbers and layout plan are awaited in order to finalise the planning process.

Therefore, the quotation must provide for part-payment at the following stages of the survey process:

- Designations, layout plan and draft diagrams (50%); and
- proof of submission to the SG's Office for approval (50%), *i.e.* after approval of the planning application.

Coordinates must be provided in WG31° format.

Queries relating to the above could be directed to Mrs. Thea Jordan, Manager City Development (Development Administration) at email jordant@umhlathuze.gov.za or telephone number 035 907 5427.

Quotations must, inter alia, be accompanied by proof of professional registration of the relevant land surveyor that will be attending to the project.